

# DTX Studio™ suite

From diagnostics to treatments with  
more focus and smarter insights for you.  
With each patient. At every visit.



DTX  
STUDIO™



## Everything you need.

Leave the time behind you where each device\* needed its own software for capturing and viewing.

With DTX Studio suite you, and your patient are in the center. Simplifying the interaction with your patient scans and images. With each patient. At every visit. Making each appointment more focused and valuable for everyone.

### DTX Studio suite lets you:

- Store and interact with all your patient images in just one software in all your practice rooms.
- Make every patient visit more effective and save time in your daily routine.
- Manage diagnostics and treatments with just one software suite, natively on both Windows® PC and Mac®.
- Securely share patient data with your colleagues and labs.
- Raise the level of patient experience and care every time.



## Launch from your Practice Management System


Open DTX Studio Clinic from your Practice Management System and never enter patient data twice.

There are dedicated links with major Practice Management Systems all over the world and a generic way for your practice to link to DTX Studio Clinic.

Reduce the number of softwares in your practice by migrating your previous image databases into DTX Studio Clinic.







## Designed for you, with you.

The DTX Studio Clinic smart features were designed while working with dentists around the world to improve the way you diagnose and communicate with your patients.

**SmartFocus™** – uses tooth positions as the reference, browsing across your various data sets from different devices and sessions has never been easier.

**SmartLayout™** – presenting all relevant images side by side dramatically improves your professional perspective and your patient's experience and engagement.

**SmartFusion™** – The intelligent way of directly combining surface models from all intraoral and desktop scanners with any CBCT scan using proprietary voxel-based algorithms. Accurate information of surfaces and underlying anatomy in 3D.

**SmartSetup™** – AI powered, fully automatic and virtual tooth setup proposal for instant review, implant planning and patient communication. Coming in 2021 in select markets.

## Direct acquire or import

Direct acquire from your imaging devices including CBCTs, Pans, Ceph, intraoral optical scanners, intraoral X-rays, intraoral cameras, diagnostic cameras and import clinical photos.

Easily import industry standard file formats, such as DICOM, STL, PLY, bmp, jpg, png, from your other 2D and 3D devices.





## Diagnostics

DTX Studio Clinic has all the tools you need to retrieve, view and inspect your various X-ray and patient images. Dedicated workspaces and filters enhance your diagnostics capabilities and directly document your findings where detected.

Dramatically improve your professional perspective and your patient's experience and engagement.

View all your relevant images side-by-side and get the comprehensive overview for diagnostic support, treatment and follow-up.

Whether it is your dental hygienist during a recall session or a colleague during an emergency appointment, DTX Studio Clinic always allows you to work with the necessary information at the time and naturally facilitate professional communication and alignment.



ROOM 3

E MOOR



## Treatments

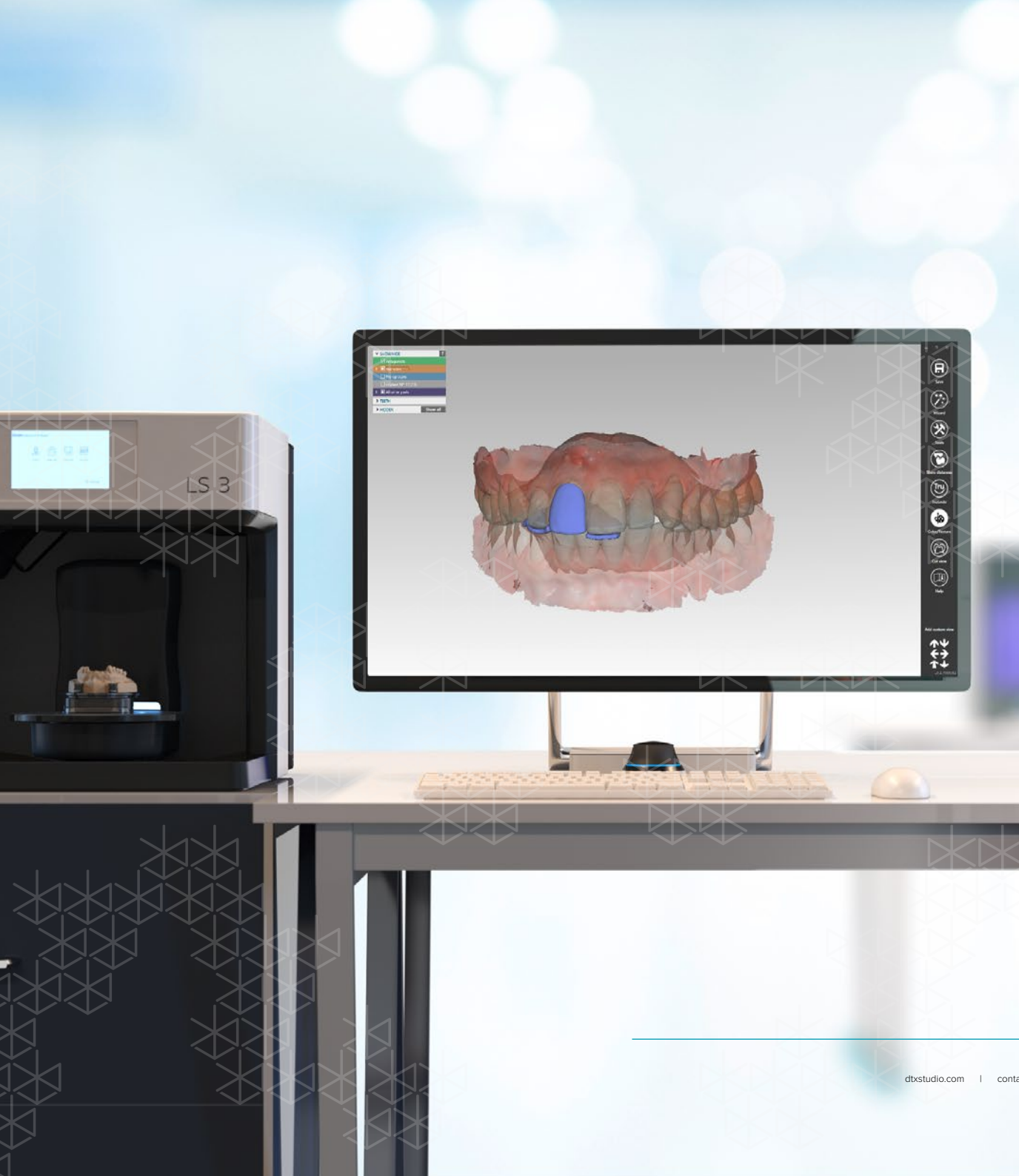
The entire image gallery serves one purpose: letting you identify the patient's individual needs so that you can act on the collected and documented evidence. Helping chairside interventions such as:

- Professional cleaning
- Direct restorations
- Endodontics
- Simple crown and bridge work

Using your patient images as your visual guide, you can diagnose patient cases effectively. Whether you use a CBCT, PAN or intraoral image as your starting point, quickly move to a dynamic workspace with all your intraoral and extraoral images side by side. Now with your CBCT and dental scan in DTX Studio suite, you can utilize specialized surgical interventions like X-Guide®.

Starting DTX Studio Implant within DTX Studio Clinic instantly allows you to plan implants with your diagnostic information using SmartFusion, automatically aligning CBCT scans with dental scans. For prosthetically driven treatments SmartSetup offers a fully automated tooth setup powered by AI. Once finalized you decide to act freehand on an automated surgical report, use a surgical guide, or transform the same plan into an X-Guide treatment using cutting edge navigated technology.





## Production

Involving your dental laboratory partner at any stage of the treatment is straight forward. Efficiently request design and production services and effortlessly share the needed imaging data directly from your patient library. DTX Studio Go allows you to upload and share data in compliance with HIPAA and GDPR.

The unique and direct communication with your dental lab technician also allows you to predictably visualize the final restoration. Lab collaboration protects you from conflicts in the prosthetic restoration step.

With DTX Studio Lab, your dental technician can also produce and modify surgical guides from DTX Studio Implant plans. The TempShell™ provisional restorations protocol is a simple chairside conversion step applied in all situations where the patient needs immediate tooth replacement.

DTX Studio Lab allows your dental technician to design and order the complete precision-milled prosthetics portfolio from Nobel Procera.







One software. Endless possibilities.

### Your practice

- Mac® or Windows® PC
- Practice management links
- Database migration
- Open import and export
- Drag and drop import
- Image acquire



Cooperation

Labs



Surgeons



Data sharing



Direct DTX Studio Implant integrations



Quick-launch to third-party software



Educational videos



DTX Studio Care program



Diagnostic support

- Visual patient history with all images in one patient file
- SmartLayout visualizing 2D and 3D images in one view
- SmartFusion of CBCT and IOS scans
- Bookmarking of findings and generation of SmartReports
- Tooth-by-tooth navigation with SmartFocus 2D and 3D
- Recent images and instant patient follow-up
- Dental optical scan comparisons
- 3D tools for endo inspection, airways segmentation, 3D TMJ



DTX Studio Clinic



DTX Studio Core



DTX Studio Implant



DTX Studio Lab



DTX Studio Go



## DTX Studio™ Clinic

All imaging modalities in one place

### Your ultimate dental imaging software, from diagnostics to treatments.

It's the one software you were looking for that does them all: X-rays, clinical photos, 2D and 3D, extraoral and intraoral imaging formats. With DTX Studio Clinic we put you and your patients in the center. Simplifying the interaction with your patient scans and images. With each patient. At every visit. Making each appointment more focused and valuable for everyone.

DTX Studio Clinic links with many Practice Management Systems, so that patient information only has to be entered once.

Allows for direct operation for all diagnostics and treatment and follow-up sessions. Proceed seamlessly to implant and restorative workflows.

Data synched internally through the DTX Studio Core solution. DTX Studio Go is an online data transfer portal to facilitate secure external collaboration – and more.





## DTX Studio™ Clinic

Continuity of care

### Work with your devices – see everything together – from diagnostics to treatments

DTX Studio Clinic directly powers a variety of imaging devices from KaVo, DEXIS, Instrumentarium, Soredex, Gendex and i-CAT. In addition, DTX Studio Clinic lets you import, export, and manage all industry standard imaging file formats in one single application.

#### DIRECT ACQUIRE

Instrumentarium™  
Soredex™  
Gendex™  
DEXIS™  
Kavo Imaging  
I-CAT™  
Selected third-party devices

#### DELEGATION OF SCANS

3D CBCT  
Panoramics  
Clinical photos  
Intraoral scanners  
X-rays  
Intraoral scanner  
Scans (3Shape TRIOS®, Medit)  
Intraoral scanner camera photos

#### IMPORT

Intraoral and extraoral scans (STL, PLY)  
2D drag and drop  
jpg, bmp, png, tiff  
DICOM (2D and 3D)  
Lab desktop scan (STL, PLY, NXA)  
Implant treatment plans (DTXIP)



#### DTX STUDIO GO

Collaboration  
Encrypted data sharing  
– With team  
– With labs  
– With referrals  
– With specialist

#### TREATMENTS

Proceed to treatment delivery

#### EXPORT

2D and 3D DICOM (export)  
STL, PLY, NXA, jpg, bmp, png, tiff  
2D and 3D optical and X-ray  
Intraoral and extraoral X-ray scans

[Compatibility list of devices](#)



